

CHOUCHOU

TOKYO

A Transforming Morning Ritual for Your Skin



CHOUCHOU

TOKYO








THE MORPHO

Your youth-enhancing morning ritual

In just 5 minutes each morning, The Morpho at-home beauty device will instantly promote a firmer, more radiant, and youthful-looking face.

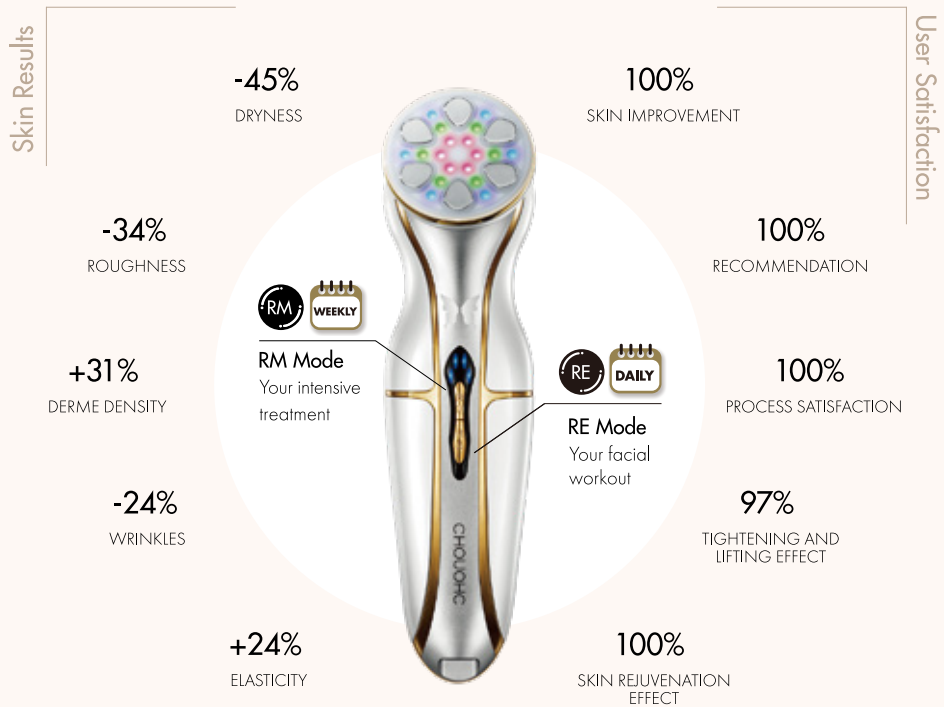
Use The Morpho device in synergy with the dedicated skincare products to offer you a unique and effortless rejuvenating ritual 100% made-in-Japan.

5 powerful skincare functions

-  MFIP Mid Frequency Interval Pulse®
-  UP Ultra Pulse®
-  RF Radio Frequency
-  EMS Electro Muscle Stimulation
-  LED Light-emitting Diode

Our Results

Along with SGS, the world's leading efficacy testing company, we have invited 30 women between the ages of 30 and 55 to adopt our 5 minute beauty ritual every morning for 28 consecutive days.



Daily facial workout



The daily facial workout, **RE Mode**, uses RF, EMS, and LED functions to improve facial contours and minimize fine lines and wrinkles, resulting in a brighter and more youthful complexion.

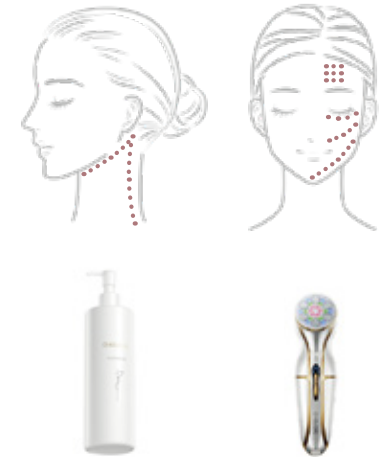
Apply two pushes of Morpho Gel to the device head and turn it on. Feel your muscles contract for around 3 seconds, then move the device point by point when the muscle relaxes.

To use the device on your face line, start under your chin and gradually move along your jaw until behind your ear, then go down along your side neck muscle to the clavicle.

On your face, move your device following three lines:

- from the tip of your chin to your earlobe
- from the corner of your lip to the ear
- from the corner of your nose to the temple

Finally, on your forehead, move from the eyebrows toward the hairline. Repeat the process on the other side of your face with two more pushes of Morpho Gel.



Weekly beauty ritual



Your weekly beauty ritual, the **RM Mode** combines advanced skincare functions (RF, MFIP, UP, and LED) for skin firming, lifting, and reducing the appearance of wrinkles and fine lines while stimulating collagen production and cell activity for a rejuvenated and bright complexion.

Apply two pushes of Morpho Serum to the device head and turn it on. Gently slide the device over your skin starting under your chin and moving along your jaw until behind your ear, then moving down along your side neck muscle to the clavicle.

On your face, move the device along 3 lines:

- from your chin to your earlobe
- from the corner of your lip to your ear
- from the corner of your nose to the temple.

Finally, on your forehead, move from the eyebrows toward the hairline. Repeat the process on the other side of your face with two more pushes of Morpho Serum.



Skincare

The Morpho device and its dedicated skincare products work in synergy to obtain effective anti-ageing results by supporting your skin's natural toning and regeneration.



MORPHO BOOSTER

The first step of your ritual to improve your skin texture and maximise hydration.



MORPHO GEL



Promotes the skin's hydration, firmness, and elasticity.



MORPHO SERUM



Boosts your collagen production and cell regeneration, helps reduce wrinkles and brightens skin complexion.



MORPHO MASK

Bio-cellulose masks soaked with hydrating ingredients to create a rejuvenating pampering care experience.



Ingredients

The Morpho skincare contains premium botanical ingredients such as **Royal Jelly** and **Natural Honey**, among other medically approved natural ingredients.

Respecting the sensitivity of your skin is our priority. The Morpho products are non-comedogenic and do not contain alcohol, mineral oil, petroleum surfactant, synthetic fragrance, colour and antioxidants.



Natural Honey

Natural humectant and moisturizer. Retains moisture within skin layers. Gently exfoliates and brightens skin.



Royal Jelly

Stimulates collagen production to prevent sagging and wrinkles. Fades pigmentation on the skin. Aids in healing acne and breakouts.



Psyllium seed extracts

Helps treat acne and breakouts by managing sebum production and reducing pores. Contains antibacterial properties to prevent and heal acne and pimples.



Rooibos

Rich in antioxidants to prevent free radicals from damaging skin cells. Reduces skin inflammation and redness.



Wild Hawthorn extract

Ultra-calming effect on irritated skin and helps the healing of acne and blemishes.



Glycyrrhizate 2K

Derived from liquorice root, a natural plant-based ingredient ideal for calming redness and sensitive skin.



Collagen

Retains water in tissues to fight dehydration. Regenerates tissues of the epidermis to improve sagging skin.



Hyaluronic acid

Ultimate ingredient for hydration, moisturising even the deep layers of the skin. Improves skin texture and boosts the skin's natural barrier to prevent dehydration.



Elastin

Strengthens skin's structure, tightens ageing skin. Plumps skin surface reduces the appearance of fine lines and wrinkles.

CHOUCHOU

TOKYO

A TRANSFORMING MORNING RITUAL
FOR YOUR SKIN



The Morpho Carver

Your First Premium Eye Beauty Device

5 Advanced Technologies for Your Eye Contour

CMP

deeply moisturize the skin, reduce wrinkles

EMP

Lifts and sculpts the eye contours

Med-High-Freq Waves

Relieves eye fatigue

Stimulation Pulses

Enhances skin firmness

Red LED

Tighten the skin



Daily Care

【5 min Morning】 【5 min Evening】

LIFT MODE

EYES GYM MODE



Weekly Care

【Once a week, 5min】

WEEKLY ANTI-AGEING MODE

By using dedicated skincare products, you can enhance the effects of The Morpho Carver's technologies and perform skincare more efficiently.

Experience the ultimate 3D radiance-boosting solution in just five minutes a day.

The Morpho Carver is specially designed for the contours of your eyes and can also be used on your entire face.

This innovative device utilizes advanced 3D face-shaping technology to help you regain youthful firmness.

Incorporating the Morpho Carver into your morning routine, along with its dedicated skincare products facilitates better absorption of your skincare regimen. The device employs light and heat energy technology to alleviate overnight fatigue, accelerate the skin renewal cycle, and enhance skin vitality. It effectively tightens facial contours and reduces the appearance of wrinkles around the eyes.



CMP Morning Mode - 5 minutes daily

Use in synergy with our Morpho Eye Gel. For a lift and anti-fatigue treatment.

Recommended for morning use to get lifting and shaping effects. Also, help to achieve better makeup adherence and to prevent flaking or clumping around the eyes.

EMP Evening Mode - 5 minutes daily

Use in synergy with our Morpho Eye Gel.

A daily muscle training for your eye contours. For maximum anti-ageing benefits, we recommended to use the EMP mode at night. This allows the active ingredients in the Eye Gel to work their magic while you sleep, promoting skin rejuvenation and minimizing the appearance of fine lines and wrinkles.



Weekly Mode - 5 minutes

Use in synergy with our Morpho Eye Serum.

The Weekly mode combines CMP and Intermittent Stimulation Pulses functions. CMP technology aids in delivering the active ingredients of the Eye Serum deep into the epidermis, enhancing its effectiveness. It also reduces wrinkles and relieves eye fatigue.

Simultaneously, the stimulation pulse recreates esthetician-inspired tapping and repetitive muscle lifting movements. This helps improve circulation, promote relaxation, and potentially enhance serum absorption.





Morpho Eye Gel 30 ml

Usage: Enhance the effects by using Carver's Daily modes.

Key Ingredients: SYN®-AKE Syn-ake, Triple Ceramides, Triple Collagen, Vitamin E, ...

Main Benefits: With its potent moisturizing effect, it addresses dryness and fine lines around the eyes. It also promotes collagen synthesis and skin regeneration in the eye area, helping to reduce dark circles, unclog pores, and minimize the appearance of wrinkles.

Morpho Eye Serum 15 ml

Usage: Enhance the effects by using Carver's Weekly mode.

Key Ingredients: SYN®-AKE Syn-ake, Hexapeptide 8 & 38, Acetyl Sodium Hyaluronate, Hydrolyzed Hyaluronic Acid,...

Main Benefits: By combining three peptides that mimic the function of Botulinum Toxin, it inhibits the contraction of facial muscles, effectively targeting wrinkles around the eyes.

SYN®-AKE Syn-ake

Similar to the action of Botulinum Toxin (Botox), SYN®-AKE helps smooth out the appearance of fine lines and wrinkles, particularly those caused by repetitive facial expressions.

Triple Ceramide

Natural lipids that help maintain the skin's barrier and moisture levels.

Hydrolyzed Hyaluronic Acid

Provides hydration and helps maintain skin's moisture balance.



Triple collagen

Improves skin firmness and reduce the appearance of wrinkles.

Hydrolyzed Collagen

Improves hallowness and sagging around the eyes.

Hexapeptide (Acetyl Hexapeptide-8 & -38)

An internationally recognized anti-wrinkle ingredient. Nourishes the skin layers, boosts collagen production, and activates skin repair factors.

Carver Treatment:

Daily:

Morning, 5 minutes. Evening, 5 minutes.
Apply the Morpho Eye Gel onto the head device, then perform the treatment.

Weekly:

Morning or evening, 5 minutes.
Apply Morpho Eye Serum onto the head device, then perform the treatment.

Mode Selection:



Daily Morning Mode:

Press and hold the D button to activate CMP mode.



Daily Evening Mode:

By pressing and holding the D button while in CMP, you can switch to EMP.



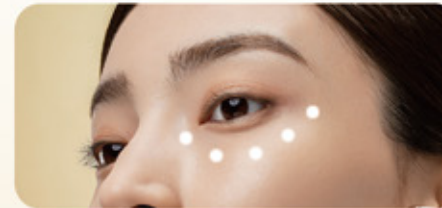
Weekly Mode:

Press and hold the W button to activate the weekly mode. There are three levels. You can select the output level by pressing the W button.

•Power off by pressing and holding the W or D button.

Usage Instructions:

Ensure all 4 elements of the device adhere closely to the treatment area. Improper adherence may result in incorrect output.



Step 1: Place the device on 5 points from the inner corner to the outer corner of the eye. Apply for about 3 seconds on each point, repeating this movement 5 times.



Step 2: Move the device slowly from the inner corner to the outer corner of the eye, repeating this movement 5 times.



Step 3: Place the device on 5 points from the inner corner to the outer corner of the eyebrow. Apply for about 3 seconds on each point, repeating the movement 5 times.



Step 4: Move the device from the inner corner of the eyebrow to the outer corner of the eye, repeating the movement 5 times.



CHOUCHOU
TOKYO

THE RADIANCE KIT

Mask & Neck



THE RADIANCE KIT

Unlock the Secret to a Radiant and Youthful Skin

Designed by doctors and skin experts, our Radiance Kit harnesses the power of advanced NIR* and red-light therapy to stimulate collagen production, diminish fine lines, and restore the skin's natural elasticity on your face and neck.

The Radiance Kit also treats enlarged pores and uneven texture as targeted treatments. It reduces pore size and sebum production, leaving your skin remarkably smooth and refined. Say goodbye to blemishes and acne woes as blue light therapy targets acne-causing bacteria while yellow light reduces inflammation, revealing a clearer, healthier complexion and moisturised skin.

Our results SGS Report

Along with SGS, the world's leading efficacy testing company, we have invited 33 women (ages ranging between 42 and 55 years) to use the Radiance Kit's morning & evening modes every day. Below are our results after only 14 days of use

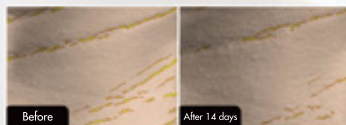
Skin Results



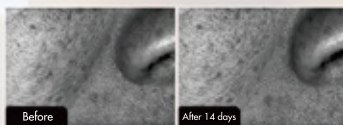
Users Satisfaction



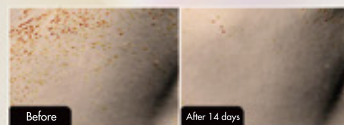
Neck wrinkles



Skin Tightness



Pores



The power of lights

The Radiance Kit employs four different LED colours, each targeting different layers of the skin, complementing their unique properties

NIR*: Dermis deep layer

Stimulates fibroblast, collagen, and elastin production to maintain firm, smooth, and wrinkle-free skin. Boosts blood circulation and cellular oxygenation for a healthy, radiant glow. Improves overall skin clarity, tone, texture, and resilience.

Red Light: Dermis layer

Stimulates collagen and reduces fine lines. Boosts skin regeneration for a healthier, radiant complexion. Accelerates wound healing, including scars and cuts.

Yellow Light: Epidermis/ Upper Dermis layer

Enhances red blood cell production for skin rejuvenation and healing. Reduces dark spots, inflammation, and facial swelling. Improves skin tone and diminishes fine lines and wrinkles.

Blue Light: Epidermis

Effective against acne-causing bacteria, reducing lesions and preventing new breakouts. Regulates skin oil production, minimising clogged pores and acne risk. Anti-inflammatory properties calming redness and improving skin clarity.

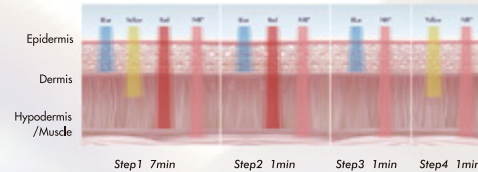


Daily Rituals

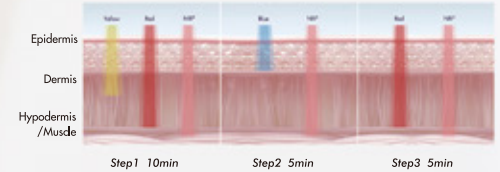
Experience the benefits of our morning and evening advanced rituals



Morning Glow mode
(10 min) 4 light combinations



Night Repair mode
(20 min) 4 light combinations



Tailored Benefits

Enhance your daily ritual with specific treatments to create the tailored care you truly need



Sagging/Wrinkles Intense Care
(20 min)

NIR-Red-Yellow



Pore/Sebum Treatment Care
(25 min)

NIR-Red-Yellow-Blue



Whitening/Dullness Care
(20 min)

Red-Yellow



Acne Care
(15min)

NIR-Red-Yellow-Blue

CHOUCHOU
TOKYO



The Mesobrush

New generation dual brush design,
scalp and hair layer-by-layer care

love



Meso Scalp Brush Head

Scalp Brush Benefits

Strengthens hair follicles

Helps reducing hair loss

Tones scalp muscle

Increases hydration

Improves nutrients absorption

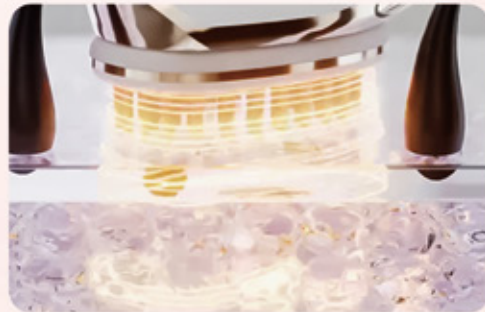
Non-Invasive MESOPORATION

Paired with the exclusive Meso Scalp Serum to penetrate the dermis, revitalises hair follicles, promoting new growth from the roots.



Advanced Scalp Mid-Low Frequency Technology

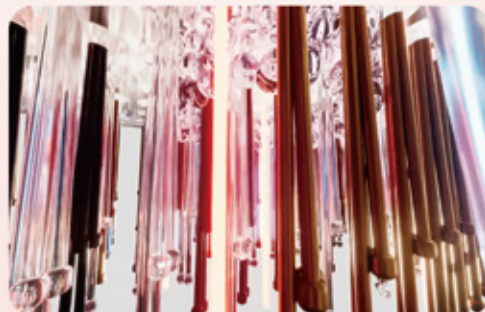
Equipped with 44 specially designed soft-bristle comb teeth, it enhances scalp microcirculation.



LED Red & Blue Light with Negative Ions

Combines 630nm red light and 450nm blue light to penetrate deep into hair follicles, strengthening strands and promoting full, voluminous hair.

Negative Ions prevent static electricity and leave your hair smooth and glossy.



Hair Styling Brush Head

Hair Brush Benefits

Stimulates hair follicles

Helps improving scalp health

Reduces static and smooth frizz

Helps lock in moisture

Creates a shiny finish

Hair Care Functions

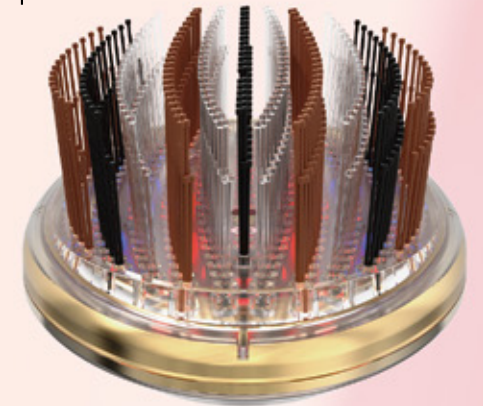
Salon-quality beauty LEDs
Blue LED supports antibacterial properties on the scalp,
Red LED supports blood circulation on the scalp.

Negative Ions

Prevents static electricity, helps keep the moisture, leading to lustrous hair.

Curved Bristle Design, Gentle on the Scalp

Ergonomically crafted, the combination of soft and firm bristles ensures sooth care, and prevents hair pulling or snagging.



Hair Brush Results



before

after

100%

Subjects felt that it improved hair gloss*

100%

Subjects believed that it improved hair volume*

* The data comes from Intertek human efficacy evaluation, which screened 33 female subjects using the Mesobrush Stylist Brush head for 28 days.

Meso Scalp Serum

Made-In-Japan

Expertly formulated with over 96% active beauty ingredients to nourish your scalp and promote radiant, healthy hair.



Meso Scalp Serum Benefits

- Provides thorough care for dry scalp issues.
- Protects the scalp from oxidation after hair colouring.
- Helps delay the appearance of grey hair.
- Neutralises scalp odour for lasting freshness.
- Repairs damage caused by ultraviolet rays, reduces hair loss, and supports scalp elasticity.

Nature's Strength, Nothing Extra

Alcohol Fragrance Silicone Pigment Menthol
Mineral Oil Paraben UV Absorber



With the exclusive Meso Scalp Serum developed by CHOUCOU, achieve up to 10x deeper penetration to rejuvenate the scalp and promote fuller, healthier hair.



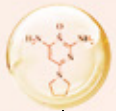
16 plant ingredients



Shikonin



Humic acid extract



16 plant ingredients



Shikonin



Humic acid extract



* Data from the test report of Shanghai Intertek Quality Technology Service Co., Ltd. (CRS-2024-264-ZH-01) (Reference: GB/T 40219-2021 "General Specifications for Raman Spectrometers" and Laboratory Internal Standard Methods): The penetration rate of the Flash Butterfly Gold Comb + Gold Moisturizing Scalp Essence sample in 1 hour is 10.15 times that of ordinary application.



The Mesobrush Set

- Device body
- Scalp Brush Head
- Hair Styling Brush Head
- Storage Pouch
- Brush Stand
- Vanity
- Meso Scalp Serum Gift Box (1 for two weeks of use)

M Morning Mode

Revitalises scalp microcirculation in the morning.

Red LED

Microcurrent



How-to-Use The Mesobrush

Scalp Brush Care:

Place the brush head on the head and use it for about 3 seconds at each place. Place the comb on each part of the head and move it evenly for treatment.

Hair Stylist Brush Care:

Start from the hairline and slowly move the comb backwards as if combing your hair (in the way you like)



- ※ Comb the hair vertically, stop, and massage after guiding the liquid (1 top of the head, 2 sides, 3 back of the head, 4 parts with severe hair loss).
- ※ If the stimulation is too strong, please select your favorite gear from 1, 2, and 3.
- ※ When the LED light is on, do not look directly at the light or lamp.
- ※ Use the comb to evenly massage the head according to the instructions during the use time of each mode.



N Night Mode

Deep infusion of the Meso Serum before bedtime.

Red LED

Non-invasive mesotherapy

Microcurrent



W Weekly Care

A full scalp care routine once a week for five minutes.

Red LED

Non-invasive mesotherapy

Microcurrent



Daily Stylist Mode

High concentration of radiant negative ions for moisturised and radiant hair.

Red LED

Blue LED

Negative ions



How to install the Meso Scalp Serum

- 1 Install the serum bottle to the body**
First open the serum bottle then insert the top of the bottle into the gray applicator. Insert the serum and applicator together in the center of the body and rotate the assembly clockwise until it cannot rotate.
- 2 Install the scalp brush to the body**
The brush is installed to the body with a magnet. The installation is complete and you can start using it.

